



## Montgomery County Public Schools

Blacksburg High School

Auburn High School

Auburn Middle School

June 14, 2011





## Montgomery County Public Schools

Brenda Blackburn, Superintendent of Schools

## Branch and Associates

Cathy Underwood, Project Executive

## SHW Group

Bill Bradley, Principal in Charge

Construction Team



Cathy Underwood, LEED  
Project Executive

Blacksburg High School

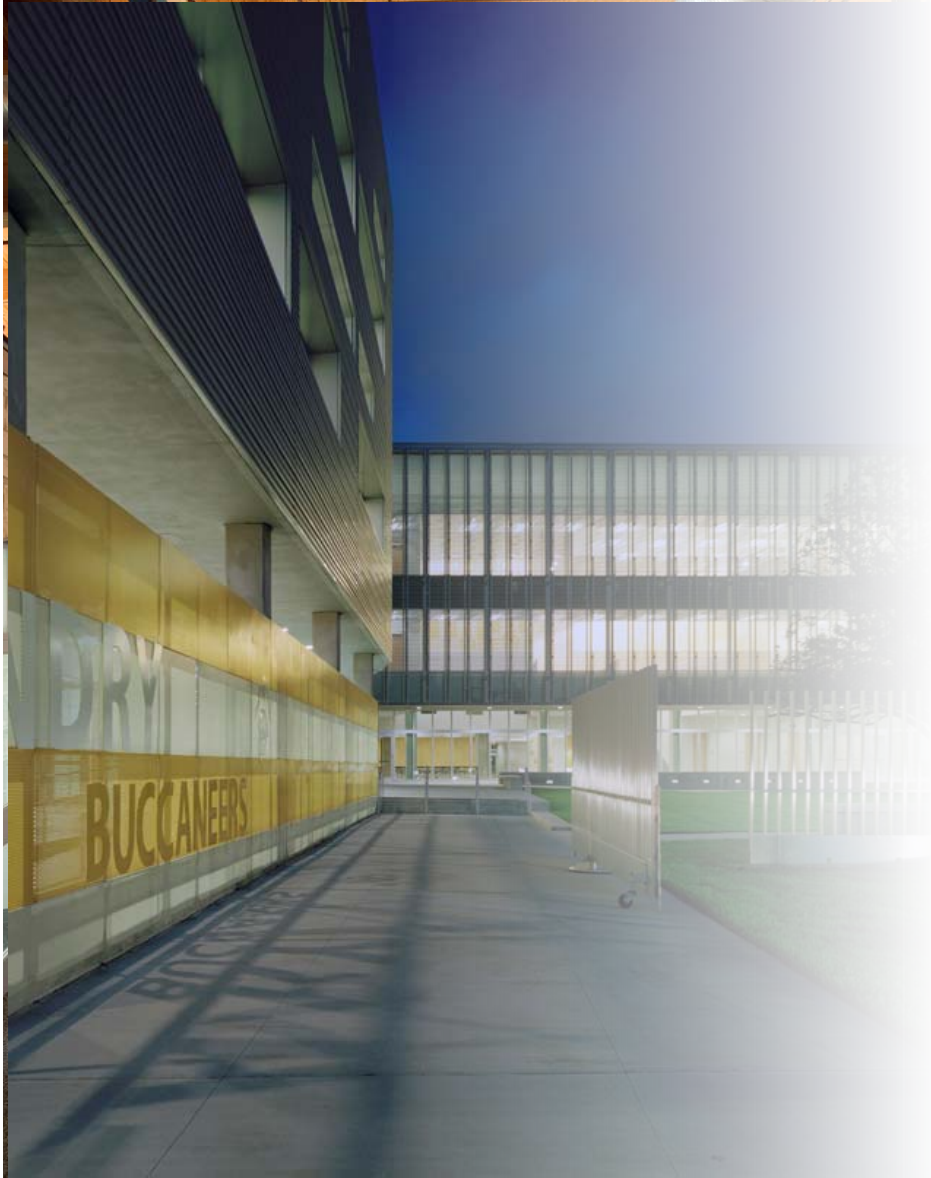


Bill Bradley, PhD, AIA, REFP  
Principal in Charge

Auburn Strand Projects

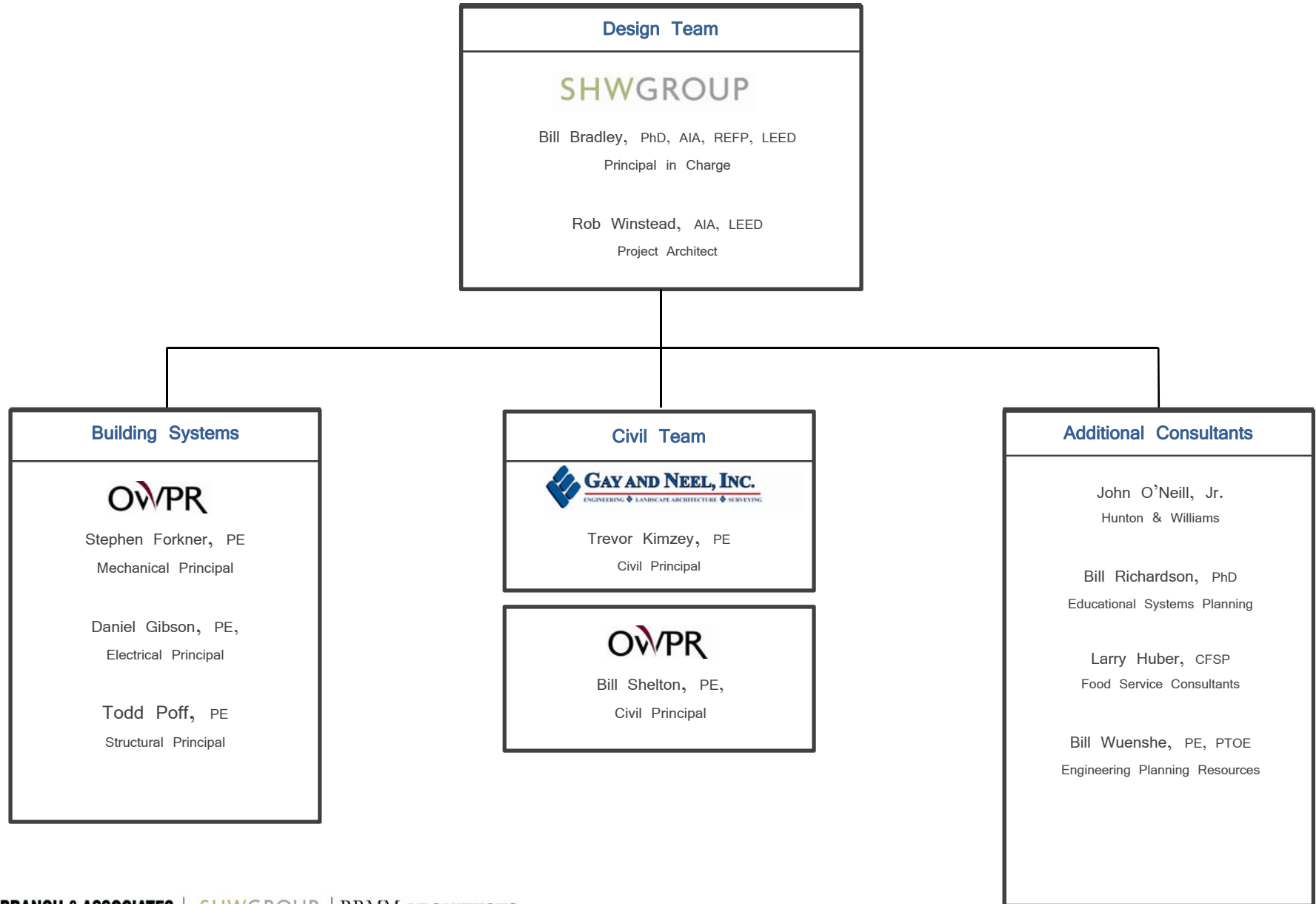


Ben Motley, RA, REFP  
Principal in Charge



- Clarkston HS, Dekalb County
- Northeast HS, Anne Arundel Co
- Northeast HS, Anne Arundel Co
- Culpeper County HS, Culpeper Co
- Elkton HS, Cecil County
- Richard Montgomery HS
- McKinney North HS, McKinney
- McKinney HS, McKinney
- Ennis HS, Ennis
- McKinney North HS, McKinney
- McKinney North HS, McKinney
- The Colony HS, Lewisville
- Sherman HS, Sherman
- Rockwall HS Additions, Rockwall
- Carthage HS, Carthage
- Coppell HS, Coppell
- Highland Park HS, Highland Park
- McKinney HS, McKinney
- Newman Smith High School
- Argyle HS, Argyle
- Alvin HS, Alvin
- William B. Travis HS, Austin
- George Bush HS, Austin
- Zapata HS, Zapata County
- Oak Ridge HS, Conroe
- Dominion HS, Loudoun County
- Park View HS, Loudoun County
- Phelps CATE HS, DC
- Heritage HS, Loudoun County
- Hamilton HS, Chandler
- Show Low HS, Show Low
- Meade HS, Anne Arundel County
- Woodgrove HS, Loudoun County
- Arundel HS, Anne Arundel County
- Arundel HS, Anne Arundel County
- St Charles HS, Charles County
- Eastern View HS, Culpeper County
- Liberty HS, Fauquier County
- Leesville HS, Wake County
- Eastern Loudoun County HS, Loudoun Co
- Spotsylvania HS, Spotsylvania County
- Albemarle HS, Albemarle County
- Chopticon HS, St. Mary's
- Fauquier HS, Fauquier County
- Stephen Decatur HS, Worcester County
- Dominion HS, Loudoun County
- Park View HS, Loudoun County
- Phelps Career and Technology HS, DC
- Potomac Falls HS, Loudoun County
- Loudoun HS, Loudoun County
- King George HS, King George County
- Christiana HS, Christina School District
- Stone Bridge HS, Loudoun County
- Paul Vi HS - addition, Diocese Of Arlington
- Bell Multicultural HS, DC
- Heritage HS, Loudoun County
- North Point HS, Charles County
- Richard Montgomery HS, Montgomery Co
- Montgomery Blair HS, Montgomery Co
- Northwestern HS, Prince Georges County
- Century HS, Carroll County
- Glenelg HS, Howard County
- Winters Mill HS, Carroll County
- Woodson HS, District of Columbia
- Freedom HS, Loudoun County







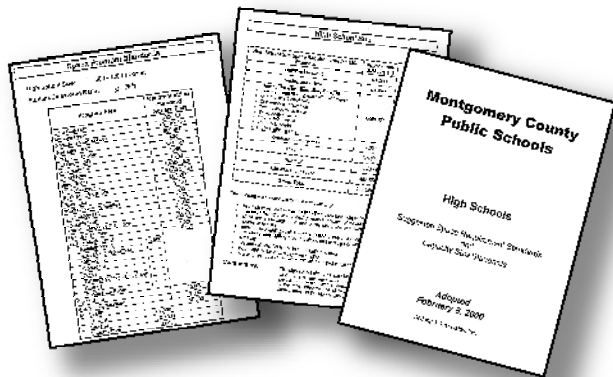
# Planning – Program Development

## Meetings Conducted

- Montgomery County Schools administrators
- Blacksburg High School administrators
- Town of Blacksburg administrators
- Blacksburg High School faculty
- Blacksburg High School parents

## Documents Studied

- Town of Blacksburg Comprehensive Plan
- Montgomery County Schools Design Standards
- Blacksburg Middle School Special Use Permit
- Blacksburg High Stadium Special Use Permit
- Montgomery County School Board minutes
- Montgomery County Supervisors minutes



# Planning – Site Plan

After several iterations that included reviewing numerous options with key stakeholders, a strong functional diagram was developed that

- is organized for safety and ease of use,
- is sensitive to neighbors and plans for future development,
- is sensitive to topography and climate, and
- maximizes opportunities for community use.

proposal, Volume II



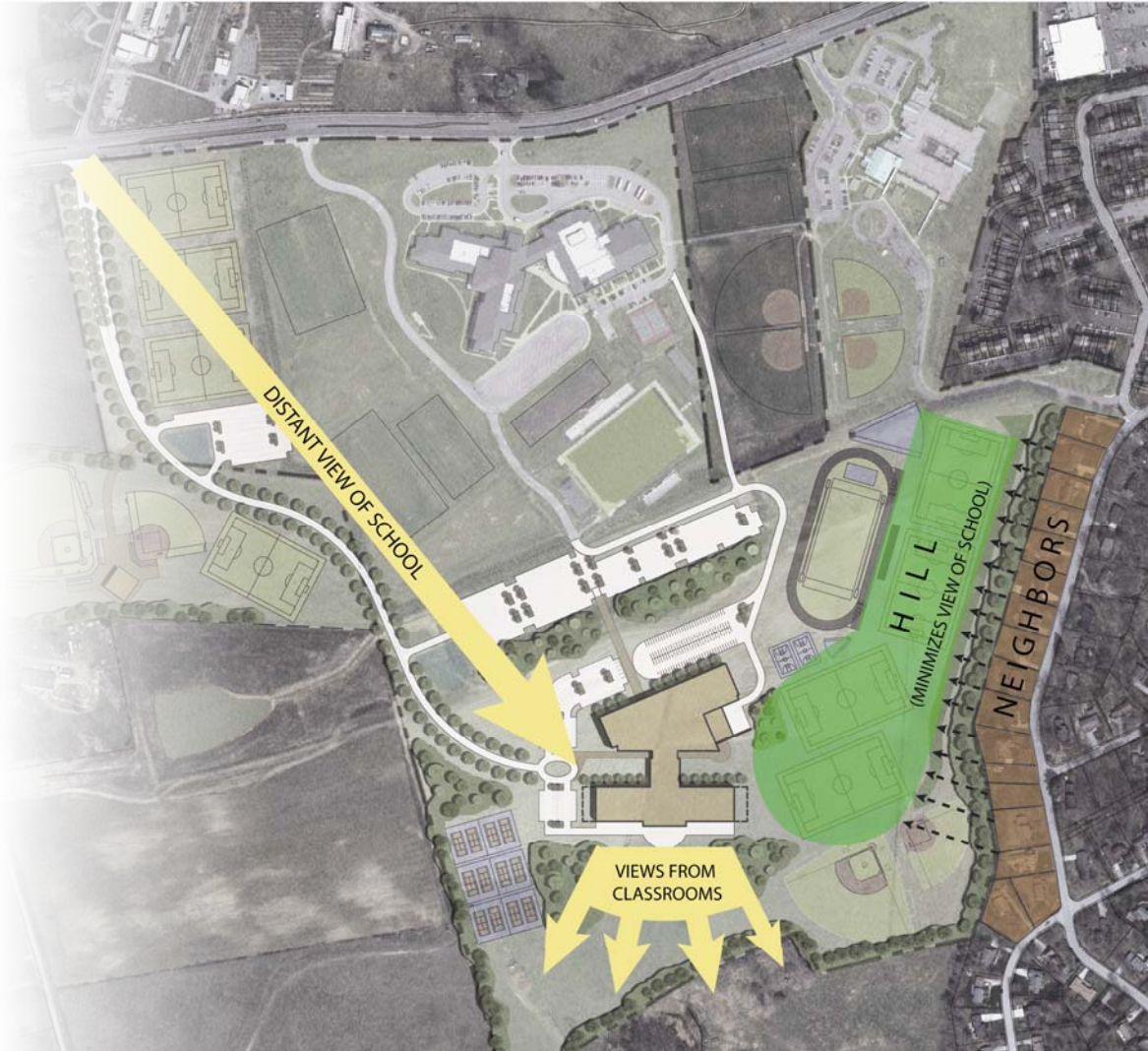


# Planning – Site Plan

After several iterations that included reviewing numerous options with key stakeholders, a strong functional diagram was developed that

- is organized for safety and ease of use,
- is sensitive to neighbors and plans for future development,
- is sensitive to topography and climate, and
- maximizes opportunities for community use.

proposal, Volume II



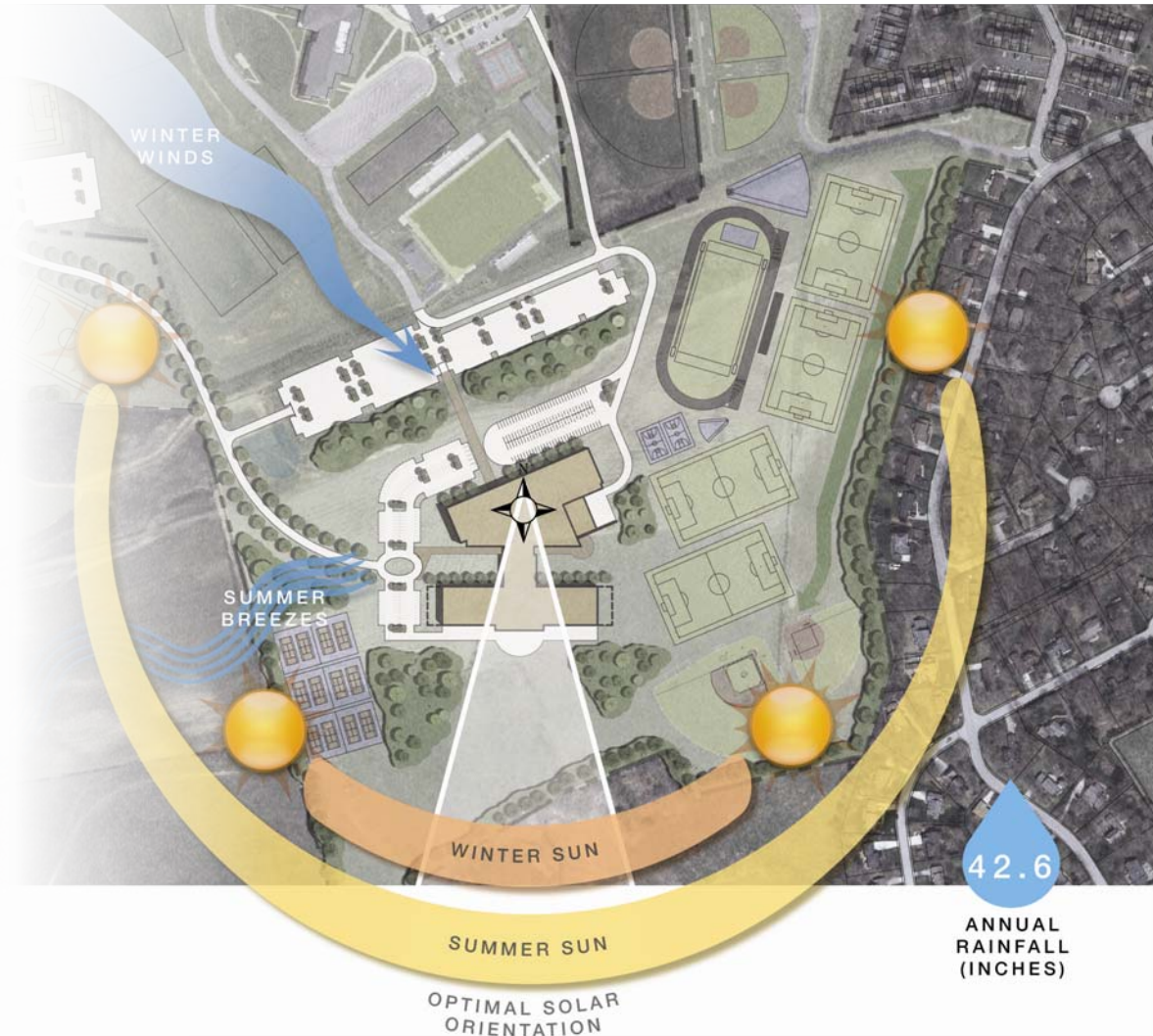


## Planning – Site Plan

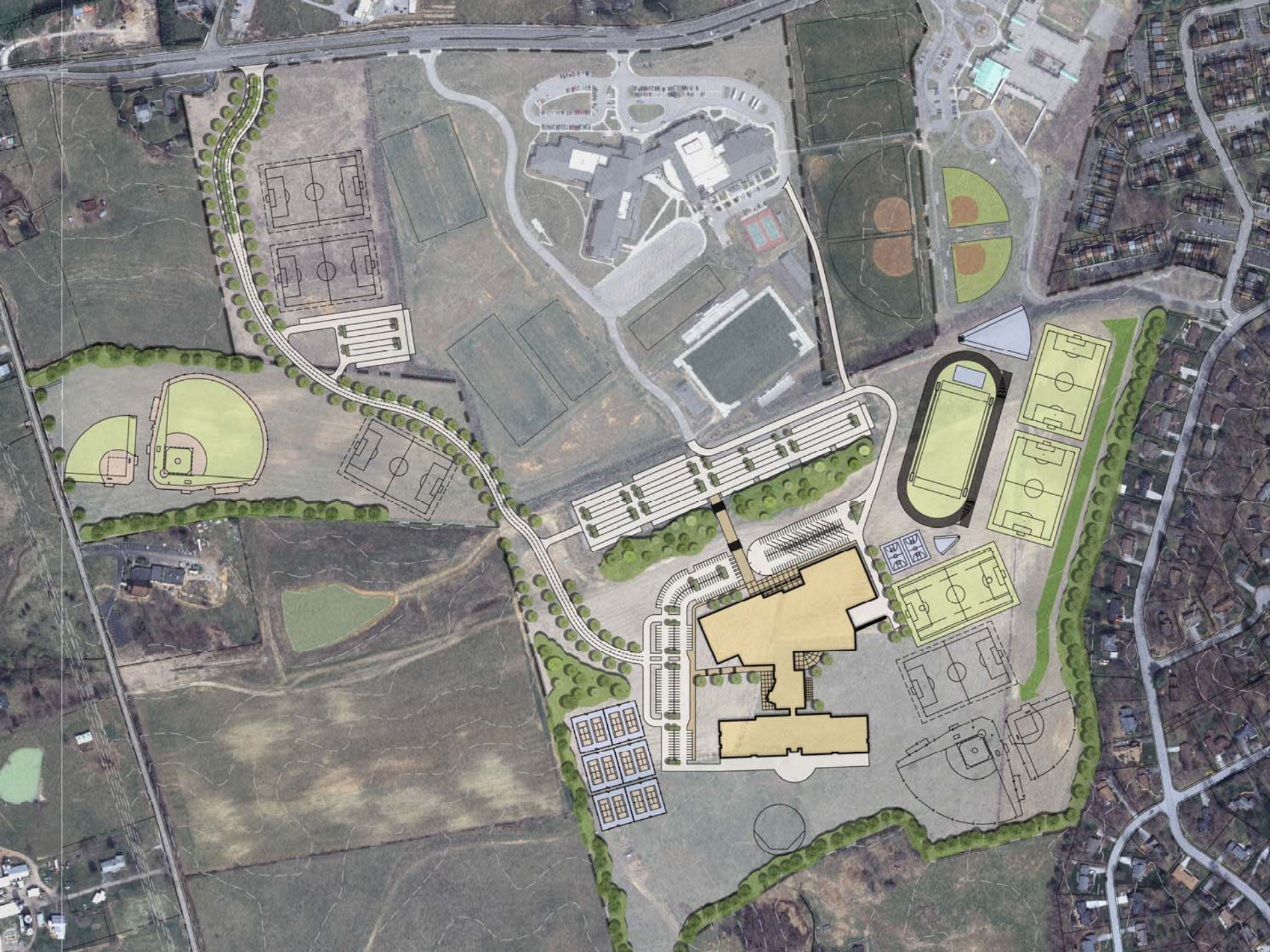
After several iterations that included reviewing numerous options with key stakeholders, a strong functional diagram was developed that

- is organized for safety and ease of use,
- is sensitive to neighbors and plans for future development,
- is sensitive to topography and climate, and
- maximizes opportunities for community use.

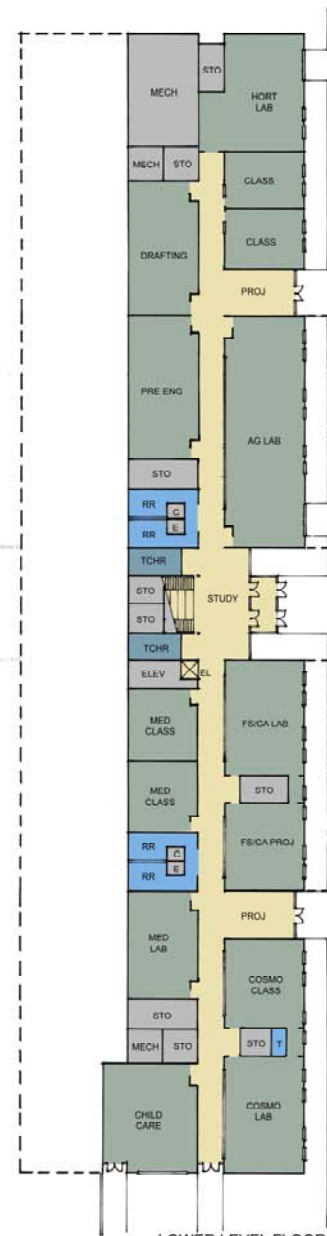
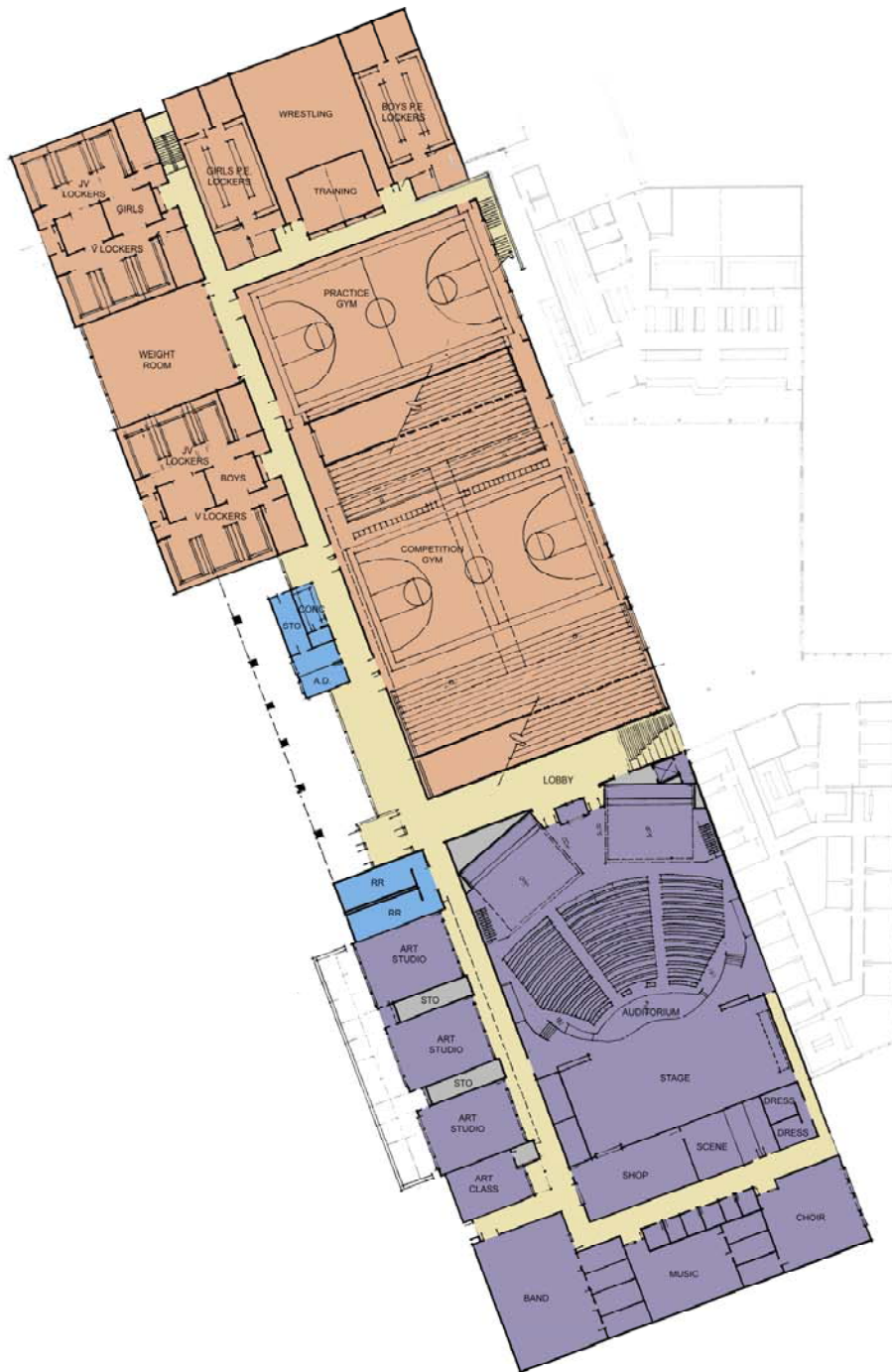
proposal, Volume II







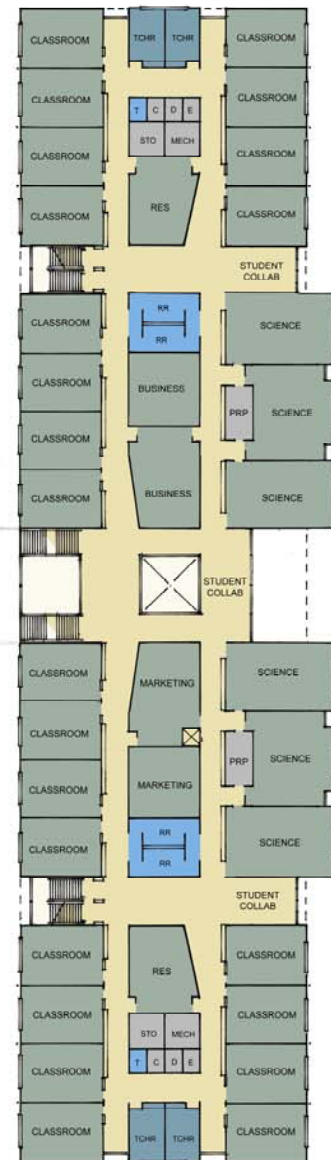
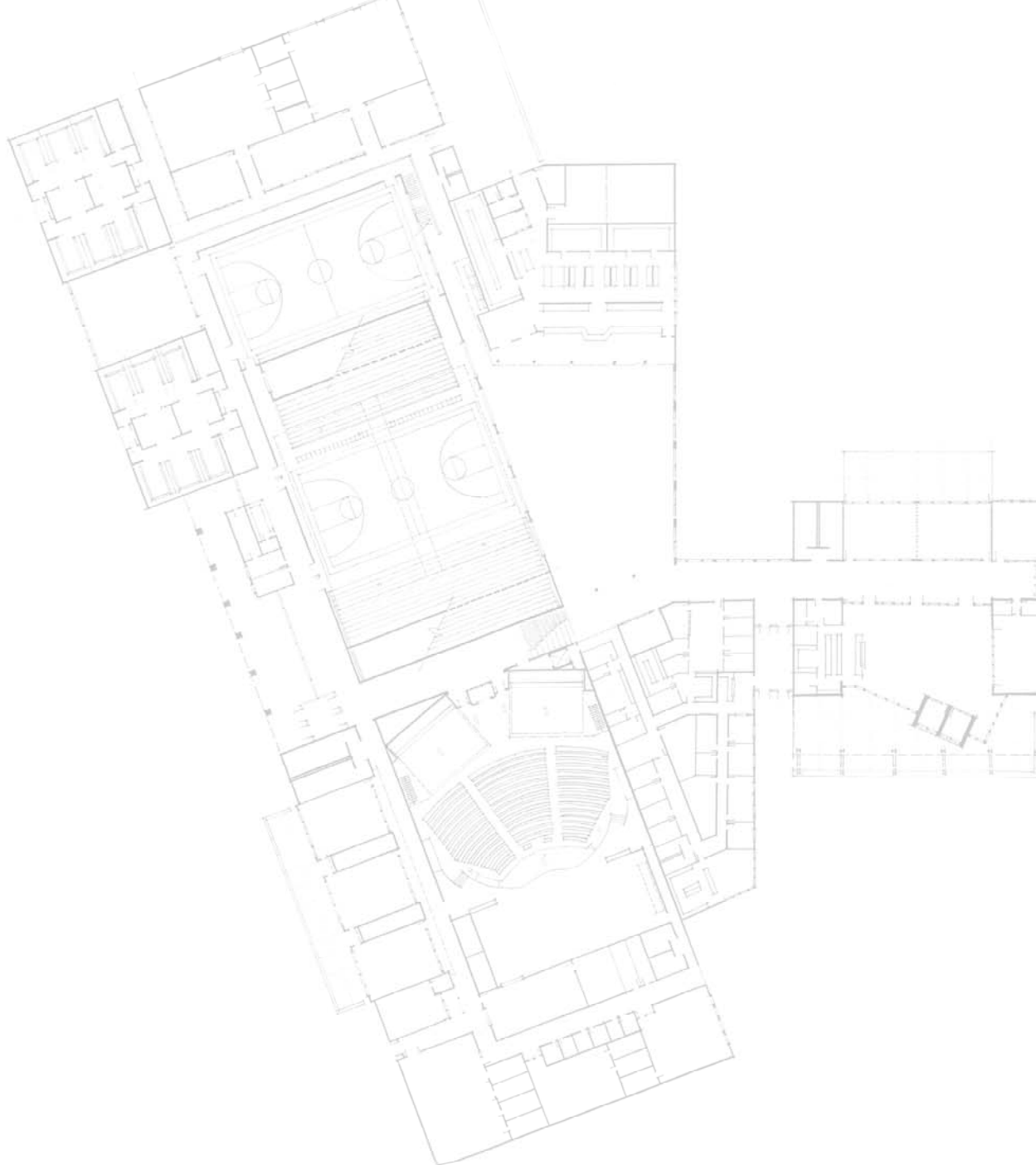




LOWER LEVEL FLOOR PLAN  
SCALE: 1" = 20'-0"







UPPER LEVEL FLOOR PLAN  
SCALE: 1" = 20'-0"



